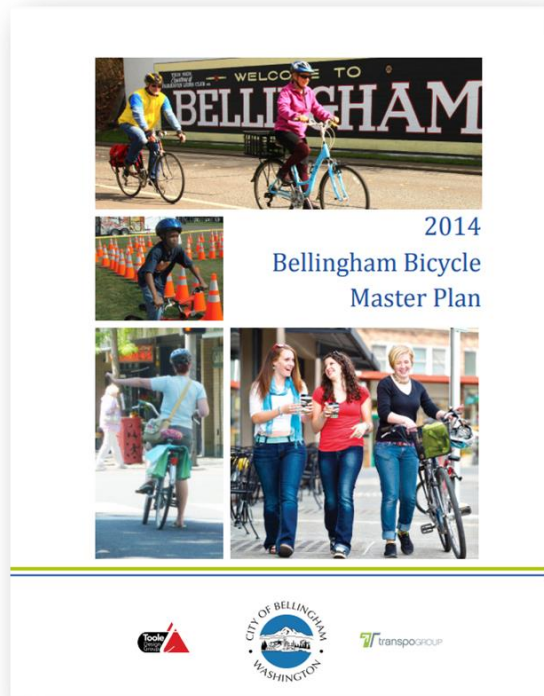
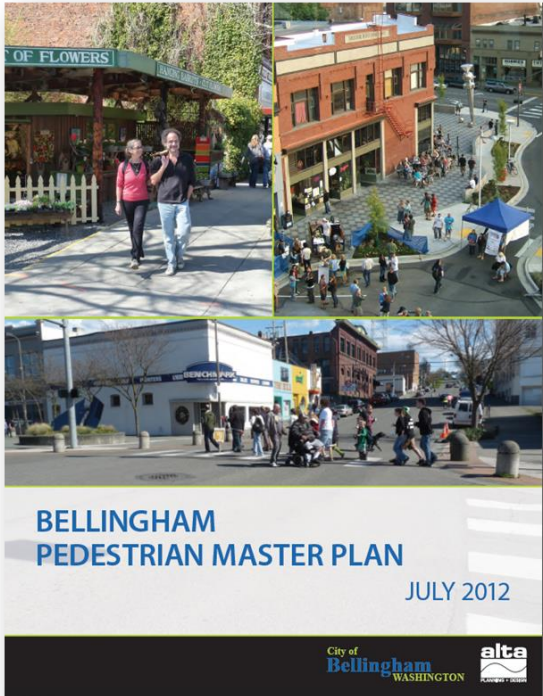


Bellingham Pedestrian & Bicycle Master Plan Updates



Pedestrian & Bicycle Master Plan Updates

- **Citywide = 25 Neighborhoods + Urban Growth Areas (outer edges of City)**
- **Identify and prioritize needs to improve walking and biking all around Bellingham**
- **Consider safety, access, and connectivity from home to your desired walking or biking destination**
- **Enhance the existing 2012 Pedestrian Master Plan and the 2014 Bicycle Master Plan**
- **Are designed to help achieve the goals of the [“Aging Well Whatcom Blueprint”](#)**



Aging Well Whatcom 2021 Older Adult Survey

Findings Published March 2022

Question #4:

If you could add or change one thing that is available for older adults and their families in Whatcom County, what would that be?

Responses

1) Transportation (13%)

7) Physical Activity (4%)

19) Walkability (2%)

24) Parks, Trails, Open Space (1%)

27) Shopping Access (1%)

Theme	Number of respondents who mentioned this theme	Percent of respondents who mentioned this theme
1. Transportation	64	13%
2. Housing	63	12%
3. Healthcare	57	11%
4. No response	42	8%
5. Social & recreational activities	40	8%
6. Nothing, don't know	31	6%
7. Physical activity	21	4%
8. Have what I/we need	20	4%
9. Information, navigation of services	18	4%
10. In-home caregivers, caregiving	17	3%
11. Food, nutrition	17	3%
12. Interaction, relationships, connection	17	3%
13. Sr Center improvements	17	3%
14. COVID response	16	3%
15. Long term care	11	2%
16. Other, unclear	11	2%
17. Outreach	11	2%
18. Technology assistance	11	2%
19. Walkability	10	2%
20. Social, political change	9	2%
21. Home maintenance assistance	8	2%
22. Finances	7	1%
23. Intergenerational interactions	7	1%
24. Parks, trails, open space	7	1%
25. Educational, learning opportunities	6	1%
26. Purpose, service, contribution	6	1%
27. Shopping access	6	1%
28. Adult day care, adult day health	5	1%
29. Safety	5	1%
30. Awareness, appreciation for older adults	4	1%
31. Dementia awareness, support	4	1%
32. Employment	4	1%
33. Legal assistance	3	1%

Primary Pedestrian Network

- 260-mile **Primary Pedestrian Network** defined
 - *Does NOT include all streets in City*
- Did NOT include surrounding Bellingham Urban Growth Area (*blue shading*) →
- ~ 162 miles (63%) network completion in 2022
- **354** sidewalks + **58** crossings = **412** projects
- Estimated cost to complete pedestrian network
 - 2012 = **\$256,534,375** → 2020 = **\$333,494,688**
 - *Does not include recent increased inflation*
 - *Does not include costs for ROW or mitigation*
 - **127 (36%) sidewalk projects exceed \$1,000,000**
 - *Several projects cost more than \$3,000,000*
 - *Many projects in PMP are not good grant candidates*



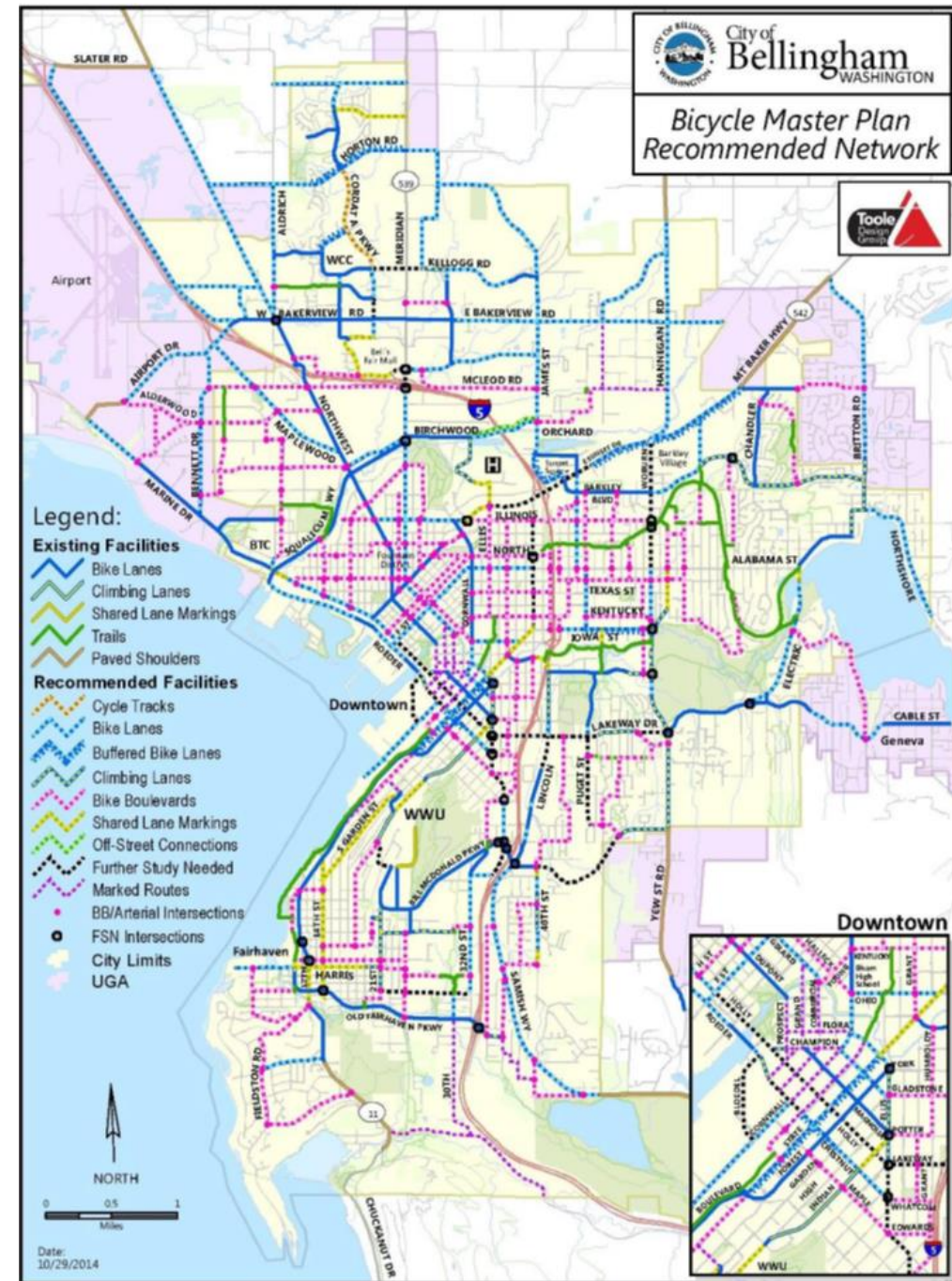
Primary Bicycle Network

Table 3.6: Existing and Recommended Facility Types for the Full Bicycle Network

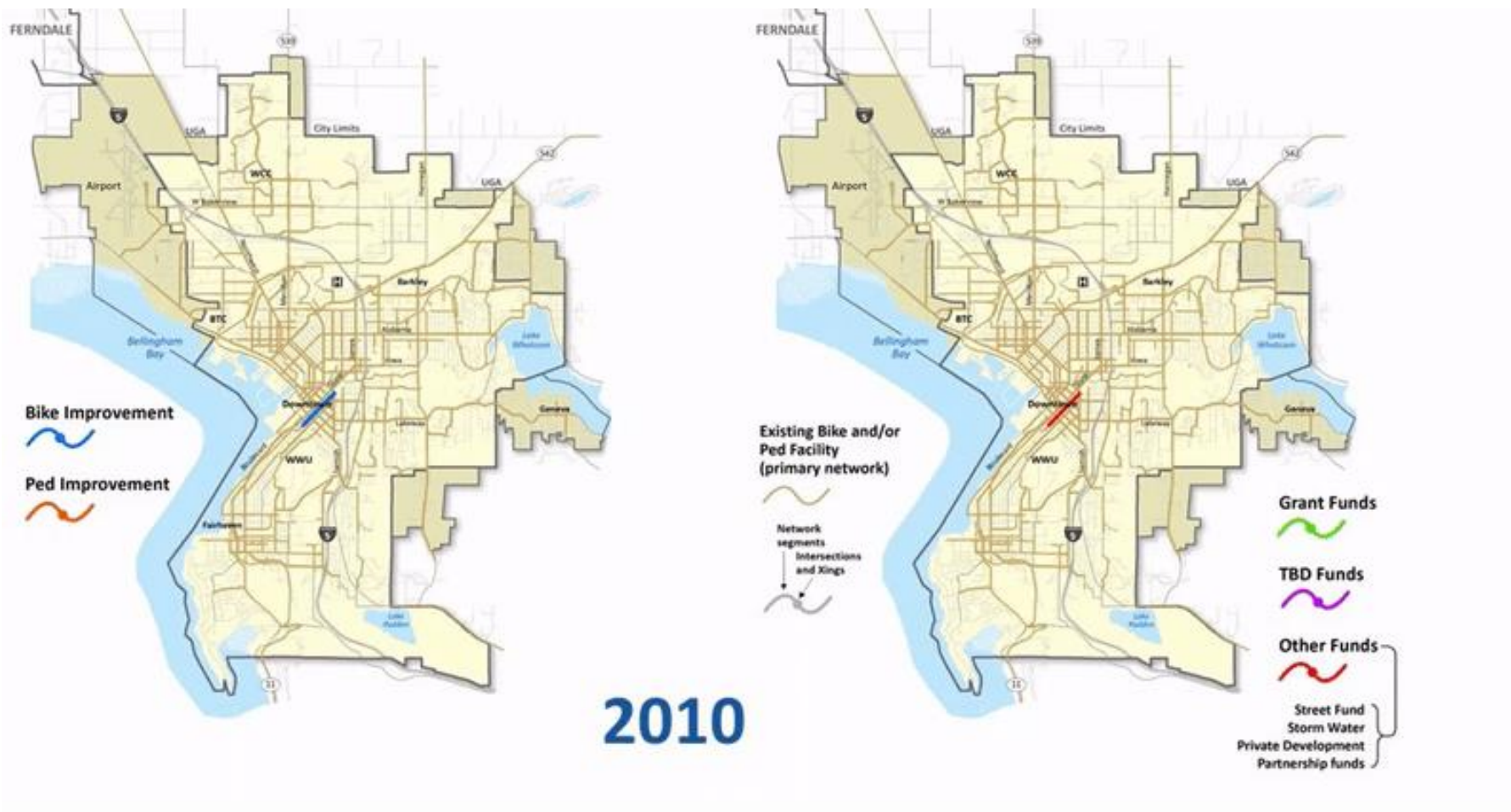
	Existing Network Miles	Percent	Total New Recommended Miles	Percent	Complete Network (Existing + New Recommended)	Percent
On-Street Facilities						
Bike Lanes	31.9*	82%	45.7*	34%	73.7*	44%
Buffered Bike Lanes	0	0%	4.0*	3%	4.0*	2%
Shared Lane Markings	0.4	1%	6.9	5%	7.3	4%
Climbing Lane	0.7	2%	7.9	6%	8.6	5%
Bicycle Boulevard	0	0%	52.1	39%	52.1	31%
Paved Shoulder	5.7	15%	0	0%	5.7	3%
Cycle Track	0	0%	0.8	<1%	0.8	<1%
Further Study	0	0%	9.4	7%	9.4	6%
Marked Route	0		7.8	6%	7.8	5%
TOTAL	38.7	100%	134.6*	100%	169.4*	100%

* Almost **60 miles** of bikeways constructed from 2014 thru 2021, increasing bicycle network from 38.7 to 98.0 miles = (60%) complete

All bicycle facility types listed above are defined and have local photos in [Bellingham Bikeways Illustrated](#) on City web site



Since the 2012 and 2014 Plans, the City has expanded its bicycle and pedestrian networks significantly



Get Involved and Help Us Make Bellingham a Great Place to Walk and Bike

- Visit the [Engage Bellingham](#) project web page
- [Sign up for email updates](#) to stay informed
- [Ask City staff a question](#) or post a comment
- Answer questions in an online [Community Survey](#)
- Show us your suggestions and request sidewalk and crossing improvements on an [interactive web map](#)
- Attend a **community event**
- Participate in a **neighborhood association meeting**
- Submit a **public comment** to the [Transportation Commission](#) or to the [City Council](#)





Learn more and participate at:

EngageBellingham.org

If you have questions, please contact:

Chris Comeau, FAICP-CTP, Transportation Planner
Bellingham Public Works Engineering
104 W. Magnolia Street, Bellingham, WA 98225
Phone: (360) 778-7946 Email: ccomeau@cob.org